



3795 CASTLE BUTTE DRIVE

Distinctive Custom Home in Keene Ranch — Castle Rock



Details

Style: Two story custom with finished walkout basement

Lot: 5.44 acres, zoned for horses

Age: 1998

Construction: Stucco, Stone, Slab

Roof: Concrete Tile

Finished Square Feet: 6000 + (approximate)

Bedrooms: 4 + (2 additional possible in basement)

Baths: 4.5

Fireplaces: Two: Family and Master Bedroom

Garage: Oversized/height (attached): 3 or 4 car or 2 car motorcycle and RV with pull thru and sanitary station

Floors: Maple hardwood, Berber carpet, Stone

Heat: (2) Gas, Forced air + A/C

Windows: Aluminum clad, Heat mirror and Low E

Decking: Huge (spans entire back of home) Maintenance "Care free" decking, Copper pipe rails. Gas hook-up

Fence: Split rail. Surrounds backyard lawn

Fire Protection: Whole house sprinkler system

Lightning and Whole House Surge protection

Professionally landscaped

Paved Drives

Well

Septic

Covenant controlled

DSL

Security system

Smoke Free



3795 CASTLE BUTTE DRIVE— Majestic Views. Brilliant Sunrises. Rich Sunsets. Nature. Peaceful. Private. Premier Equestrian Community. Scenic Trails. 5.44 acres. Dramatic Custom. "Beaver Creek Style" 2 story walkout. Ideal for family living and entertaining.

3% Broker CO-OP

MLS #404949

By Appointment Only

303-681-3218

www.3795castlebutte.com



Main Floor *Spectacular views!*

Entry

2 story vaulted
8 ft Solid Wood Front door
Closet
7.5 ft doors throughout Main Floor
Maple floors: Dining/Kitchen/study/hall/
powder

Library:

Paneled cherry with built-ins
Ceiling detail
7 ft French doors

Kitchen:

Cherry cabinets with under cabinet lighting
Granite tile
Oversized deep kitchen sink
Dacor gas cook top with grill

Oven, Microwave/convection oven
Bosch dishwasher
Butler's pantry with sink and lighted glass-
ware cabinet
Cherry island with granite counter
Beautiful Copper hood
Walk-in pantry
8 ft glass sliders that lead to the deck
Break fast nook with speaker system

Dining:

Gorgeous views of the Butte
Speaker system
Beam Ceiling detail
8 ft glass sliders that lead to the deck

Family:

Step down/ 13 ft ceiling
Large stone gas fireplace w/remote
Custom Cherry entertainment unit
Surround sound, speaker system

8 ft glass sliders that lead to the deck

Office/Tech/craft Room:

Built in desk unit

Laundry:

Closet
Doors to garage and one to side of house

Powder:

Custom cherry cabinet
Granite tile top
Deck: (12 x 15.5 covered)
Spans the entire back of home
No maintenance "Carefree" decking/ cop-
per railing

Speaker system

Attached shades on covered area

Gas hook up for grill

Garage:

Oversized/height with RV pull thru/dump

Second Floor *Spectacular views!*

Master Retreat:

Huge windows with expansive views
Fireplace (gas) with remote
Vaulted ceilings
His and hers walk-in closets with built-ins

Master Bath:

Cherry cabinets
Marble counters
Marble and stone shower
Private commode
Skylight
Marble and stone shower
6 ft jetted tub

Bedroom 1:

Great views
Vaulted ceiling
Full bath/ Maple cabinets
Walk-in closet with built shelves

Bedroom 2:

Vaulted ceilings
Jack and Jill bath with Bedroom 3
Maple cabinets
Closet with shelves

Bedroom 3:

Vaulted ceilings
Closet with shelves



Master Suite

Second Floor has air conditioning

Walkout Basement *With Views!*

Theater/Bar Area:

Surround sound speaker system
Walk-in component room/storage closet
Sliders that lead to concrete patio area
Gas hook up for fireplace
Cherry cabinets
Gorgeous curved copper bar
Oversized sink

Game Area:

Spacious/ pool or ping-pong table

Exercise:

Sliders to back yard

Speaker system

Bath:

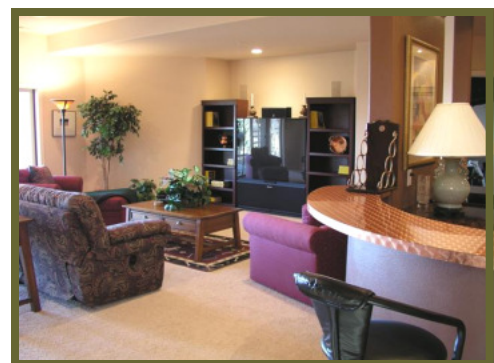
Full bath with *Steam shower*
Closet with shelves

Office:

Great views/ lots of light
Sliders that lead to backyard
2 phone lines

Mechanical:

(2) 74 gallon water heaters
whole house humidifier
All floors in basement concrete slab
(2) furnaces 1-mechanical 1- attic
Whole house water filter



Theater/Bar area